

OYSTER PERPETUAL
SEA-DWELLER
ROLEX DEEPSEA



ROLEX

WEARING THE WATCH FOR THE FIRST TIME

Before being worn for the first time, or if it has stopped, a Rolex watch must be wound manually in order to function correctly and precisely. To wind the watch manually, unscrew the winding crown completely, then turn it several times clockwise. (Turning in the other direction has no effect.) A minimum of 25 turns is required for adequate partial winding. The watch will then be wound automatically as long as it is worn on the wrist. Carefully screw the crown back down against the case to ensure waterproofness.



The green seal accompanying your Rolex watch is a symbol of its status as a Superlative Chronometer. This exclusive designation attests that it has successfully undergone a series of specific final controls by Rolex in its own laboratories in addition to the official COSC certification of its movement. This unique testing of its chronometric precision, waterproofness, self-winding and reliability pushes back the boundaries of performance and makes Rolex a benchmark for excellence in mechanical watches. For further information, please visit [rolex.com](https://www.rolex.com).



THE HEART OF THE SEA-DWELLER MODELS

OYSTER PERPETUAL SEA-DWELLER	4-5
OYSTER PERPETUAL ROLEX DEEPSEA	6-7
HELIUM ESCAPE VALVE	8-9

USING YOUR WATCH

OVERVIEW	10-11
SETTING THE WATCH	12-15
UNIDIRECTIONAL ROTATABLE BEZEL	16-17
OYSTERLOCK CLASP WITH ROLEX GLIDELock FINE-ADJUSTMENT SYSTEM	18-21
FLIPLOCK EXTENSION LINK	22-23

ROLEX SERVICE

CARING FOR YOUR ROLEX	24-25
AFTER-SALES SERVICE	26-27
WORLDWIDE SERVICE NETWORK	28

ROLEX.COM



ROLEX

PERPETUAL DATE



SEA-DWELLER

4000ft = 1220m

SUPERLATIVE CHRONOMETER

OFFICIALLY CERTIFIED

OYSTER PERPETUAL SEA-DWELLER

The Oyster Perpetual Sea-Dweller, guaranteed waterproof to a depth of 1,220 metres (4,000 feet), was designed to accompany the pioneers of deep-sea diving. Its helium escape valve and unidirectional rotatable bezel make it a true professional diving instrument. Its dial offers exceptional legibility thanks to the Chromalight hour markers and hands. The 43 mm case is a paragon of robustness. The Triplock winding crown, with a triple waterproofness system, is protected by a crown guard that is an integral part of the middle case.

The sapphire crystal, with a Cyclops lens at 3 o'clock, is virtually scratchproof.

The Oyster Perpetual Sea-Dweller is equipped with a self-winding mechanical movement entirely manufactured by Rolex.

The Oyster Perpetual Sea-Dweller features an Oyster bracelet with an Oysterlock safety clasp, the Rolex Glidelock fine-adjustment system and, depending on the model, a Fliplock extension link.



ROLEX

PERPETUAL DATE

DEEPSEA



28

SEA-DWELLER

12800 ft = 3900 m

SUPERLATIVE CHRONOMETER

OFFICIALLY CERTIFIED

OYSTER PERPETUAL ROLEX DEEPSEA

The Oyster Perpetual Rolex Deepsea illustrates the supremacy of Rolex in mastering waterproofness. Guaranteed waterproof to a depth of 3,900 metres (12,800 feet), its patented Ringlock System architecture allows it to resist the pressure at these extreme depths. Its helium escape valve and unidirectional rotatable bezel make it a true professional diving instrument. Its dial offers exceptional legibility thanks to the Chromalight hour markers and hands. The 44 mm case is a paragon of robustness. The Triplock winding crown, with a triple waterproofness system,

is protected by a crown guard that is an integral part of the middle case. The sapphire crystal is virtually scratchproof.

The Oyster Perpetual Rolex Deepsea is equipped with a self-winding mechanical movement entirely manufactured by Rolex.

The Oyster Perpetual Rolex Deepsea features an Oyster bracelet with an Oysterlock safety clasp, the Rolex Glidelock fine-adjustment system and a Fliplock extension link.

HELIUM ESCAPE VALVE

Professional saturation divers must spend long periods of time in a decompression chamber, where the gas mixture they breathe is composed of approximately 95 per cent helium. The helium molecules are so small that they penetrate the watch case, with the result that the pressure inside the watch equalizes with that inside the chamber.

During the decompression phase that slowly brings the diver back to normal atmospheric pressure, the gas cannot always escape from the case sufficiently

quickly. The resulting excess internal pressure risks damaging the watch.

To solve the problem, the Oyster Perpetual Sea-Dweller and the Oyster Perpetual Rolex Deepsea are equipped with a helium escape valve allowing the gas trapped inside the watch to be released without affecting the integrity and waterproofness of the Oyster case.



OVERVIEW

- 1 Hour hand
- 2 Minute hand
- 3 Seconds hand
- 4 Date window
- 5 Unidirectional rotatable bezel with 60-minute graduated Cerachrom insert in ceramic
- 6 Triplock winding crown with triple waterproofness system
- 7 Helium escape valve

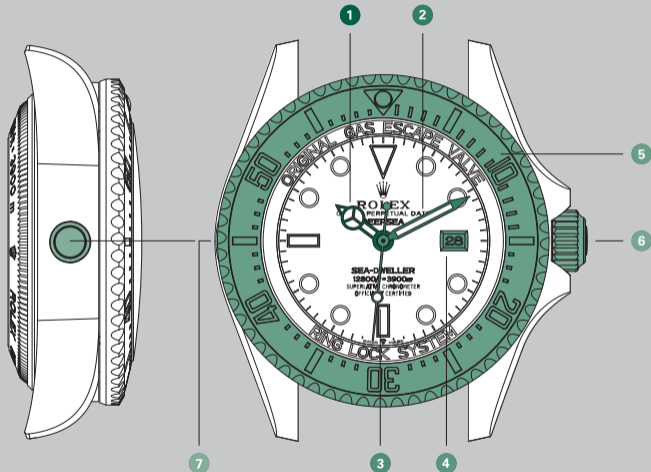


Diagram of the
Oyster Perpetual Rolex Deepsea

SETTING THE WATCH

Screwed-down position (*position 0*)

The crown is completely screwed down against the case. When the crown is in this position, the Oyster Perpetual Sea-Dweller and the Oyster Perpetual Rolex Deepsea are guaranteed waterproof to a depth of 1,220 and 3,900 metres (4,000 and 12,800 feet), respectively.

Manual winding (*position 1*)

The crown is unscrewed. To wind the watch manually, turn the crown clockwise; turning in the other direction has no effect. When setting the watch for the first time or after the watch has stopped, complete a minimum of 25 turns for partial winding.

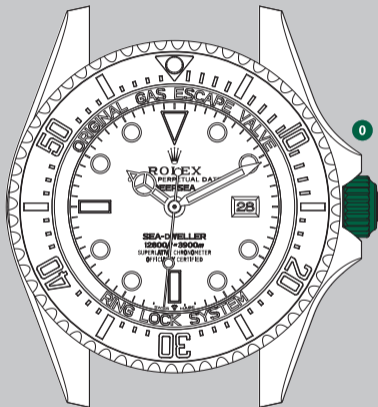
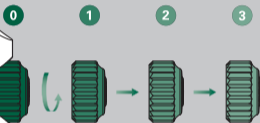


Diagram of the
Oyster Perpetual Rolex Deepsea

Initial winding and setting

- Wind the watch manually (*see page 12*).
- Set the time by turning the hands clockwise and noting the date change at midnight (*see pages 14-15*).
- Set the date (*see pages 14-15*).



Unscrew and then pull out

After every use, carefully screw the crown back down against the case to guarantee the waterproofness. Return the crown to *position 1* and apply light pressure on it while screwing it down clockwise against the case. The crown should never be unscrewed underwater.

Setting the date (*position 2*)

The crown is unscrewed and pulled out to the first notch. To set the date, turn the crown clockwise. (Turning in the other direction has no effect.) During this operation, the watch continues to function.

Setting the time (*position 3*)

The crown is unscrewed and pulled out to the second notch. The seconds hand is stopped, allowing you to set the time to the precise second. To set the hour and minute, turn the crown in either direction. To avoid confusion between a.m. and p.m. hours, move the hour hand to 12 o'clock. If the date changes, it is midnight.

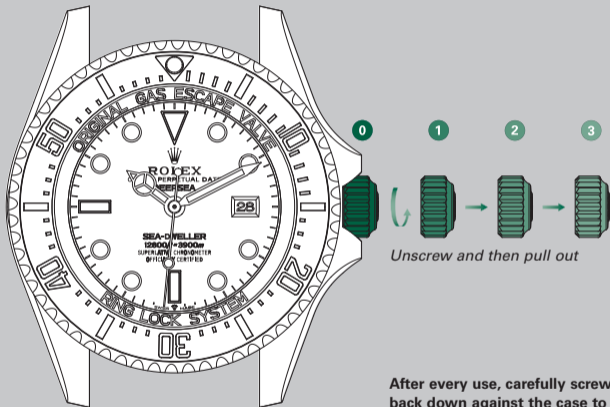


Diagram of the
Oyster Perpetual Rolex Deepsea

After every use, carefully screw the crown back down against the case to guarantee the waterproofness. Return the crown to *position 1* and apply light pressure on it while screwing it down clockwise against the case. The crown should never be unscrewed underwater.



UNIDIRECTIONAL ROTATABLE BEZEL

The Oyster Perpetual Sea-Dweller and the Oyster Perpetual Rolex Deepsea allow divers to safely monitor their dive time thanks to the unidirectional rotatable 60-minute graduated bezel. This bezel is fitted with a Cerachrom insert made of extremely corrosion-resistant and virtually scratchproof ceramic.

Before the dive

Before beginning your descent, turn the bezel until the triangle on the graduation is opposite the minute hand. It indicates the beginning of the dive

and is visible in the dark thanks to a phosphorescent capsule.

During the dive

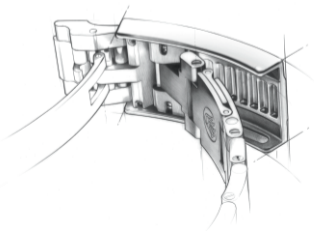
The duration of the dive is indicated on the graduation on the bezel by the minute hand.

For safety reasons, the bezel turns only counterclockwise. Accidental rotation of the bezel can therefore only shorten the dive time.

OYSTERLOCK CLASP WITH ROLEX GLIDELock FINE-ADJUSTMENT SYSTEM*

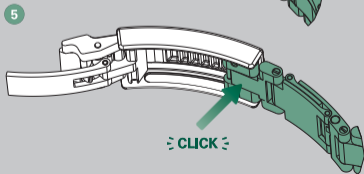
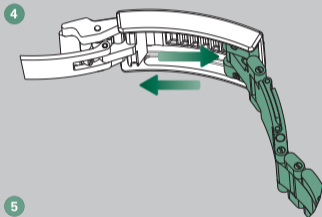
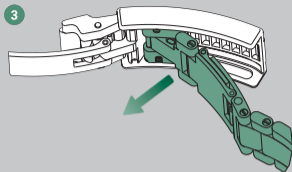
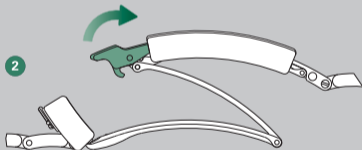
**Oyster Perpetual Sea-Dweller model*

The Rolex Glidelock fine-adjustment system enables the bracelet length to be adjusted in approximately 2 mm increments up to around 20 mm, allowing the watch to be worn over a diving suit.



Adjusting the bracelet

- 1 Open the safety catch
- 2 Open the clasp
- 3 Pull on the bracelet to release it from the notch in the rack
- 4 Adjust the position of the bracelet to the desired length
- 5 Lock down the bracelet



*Diagrams of the Oyster Perpetual Sea-Dweller
in Oystersteel*

OYSTERLOCK CLASP WITH ROLEX GLIDELock FINE-ADJUSTMENT SYSTEM*

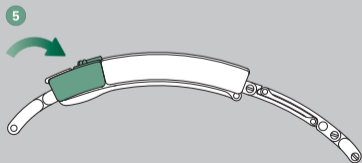
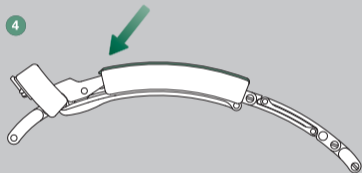
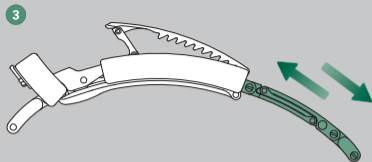
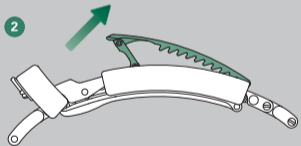
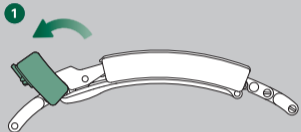
**Oyster Perpetual Rolex Deepsea model*

The Rolex Glidelock fine-adjustment system enables the bracelet length to be adjusted in approximately 2 mm increments up to around 20 mm, allowing the watch to be worn over a diving suit.



Adjustment of the Rolex Glidelock fine-adjustment system

- 1 Open the safety catch
- 2 Lift the centre panel
- 3 Slide the bracelet to the desired length
- 4 Push the centre panel back down
- 5 Close the safety catch



FLIPLOCK EXTENSION LINK*

**Only available on some models*

The Fliplock extension link allows the bracelet length to be increased by an additional 26 mm approximately, for wear over a thicker diving suit.

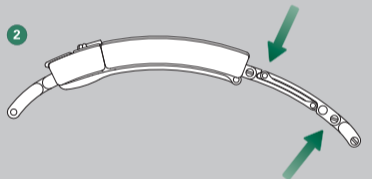
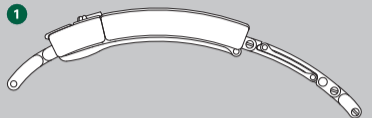
Opening the Fliplock extension link

- 1 Remove the watch from your wrist and fully extend the bracelet using the Rolex Glidelock fine-adjustment system (*see pages 18-21*)
- 2 Press the extension link on both ends at once to open it

Closing the Fliplock extension link

- 1 Fold the link
- 2 Press down the clasp side first
- 3 Click down the link on the bracelet side while pressing down on both ends of the link

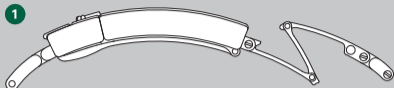
To open



Diagrams of the
Oyster Perpetual Rolex Deepsea

CLICK

To close



CARING FOR YOUR ROLEX

Thanks to Rolex expertise, your watch will require very little day-to-day care.

You can help preserve its lustre by cleaning it occasionally with a microfibre cloth. You can also wash the case and bracelet from time to time using soapy water and a soft brush. After wearing your watch in the sea, it is important to rinse it with fresh water to remove any salt and sand deposits.

Before cleaning your watch, always ensure that the crown is screwed down properly against the case to guarantee waterproofness.

AFTER-SALES SERVICE

Rolex watch servicing ensures that your timepiece will continue to perform optimally and meet Rolex's stringent requirements in terms of precision, reliability and waterproofness throughout its life.

The timekeeping accuracy of your watch is largely dependent on high-performance lubricants specially developed by Rolex to minimize friction and prevent wear of components. To guarantee continued accuracy and waterproofness, Rolex recommends that you periodically return

your watch to an Official Rolex Retailer or Service Centre for professional servicing. When your watch is serviced by a Rolex watchmaker, the watch is completely dismantled and all of its components are cleaned. Each individual component is closely examined and those that no longer meet Rolex's functional and aesthetic specifications are replaced with genuine Rolex parts. The movement is carefully lubricated then tested to guarantee its timing accuracy; the case and the metal bracelet are meticulously refinished to restore

their lustre. Your Rolex then undergoes a series of rigorous technical tests and checks to guarantee its waterproofness, power reserve and precision.

After a complete Rolex service, your watch is covered by a service guarantee.

WORLDWIDE SERVICE NETWORK

The network of Official Rolex Retailers and Service Centres covers more than 100 countries around the world and draws on the expertise of highly skilled watchmakers, carefully selected and trained by Rolex.

Official Rolex Retailers can advise you on all the technical aspects of your watch's functions. Whether your bracelet needs sizing or it is time for a complete service, highly qualified Rolex watchmakers are on hand worldwide to meet all of your service needs.

For a list of Official Rolex Retailers and Service Centres, please visit [rolex.com](https://www.rolex.com).

ROLEX.COM

We invite you to visit **rolex.com**,
a privileged place to learn more about
the functions of your Rolex watch
and about the quality, know-how and
fundamental values of the brand.

Welcome to the world of Rolex.

Rolex reserves the right to modify the models illustrated in this publication at any time.

© Rolex SA, 3-5-7, rue François-Dussaud, 1211 Geneva 26, Switzerland
IMR-SEA-EN-19 - 5.2020 - Printed in Switzerland

[rolex.com](https://www.rolex.com)

