

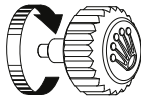
OYSTER PERPETUAL  
SEA-DWELLER  
ROLEX DEEPSEA



ROLEX

## WEARING THE WATCH FOR THE FIRST TIME

Before being worn for the first time, or if it has stopped, a Rolex watch must be wound manually in order to function correctly and precisely. To wind the watch manually, unscrew the winding crown completely, then turn it several times clockwise. (Turning in the other direction has no effect.) A minimum of 25 turns is required for adequate partial winding. The watch will then be wound automatically as long as it is worn on the wrist. Carefully screw the crown back down against the case to ensure waterproofness.



The green seal accompanying your Rolex watch is a symbol of its status as a Superlative Chronometer. This exclusive designation attests that it has successfully undergone a series of specific final controls by Rolex in its own laboratories in addition to the official COSC certification of its movement. This unique testing of its chronometric precision, waterproofness, self-winding and reliability pushes back the boundaries of performance and makes Rolex a benchmark for excellence in mechanical watches. For further information, please visit [rolex.com](https://www.rolex.com).



---

## THE HEART OF THE SEA-DWELLER MODELS

---

OYSTER PERPETUAL SEA-DWELLER	4-5
OYSTER PERPETUAL ROLEX DEEPSEA	6-7
HELIUM ESCAPE VALVE	8-9

---

## USING YOUR WATCH

---

OVERVIEW	10-11
SETTING THE WATCH	12-15
UNIDIRECTIONAL ROTATABLE BEZEL	16-17
ROLEX GLIDELOCK FINE-ADJUSTMENT SYSTEM	18-21

---

## ROLEX SERVICE

---

CARING FOR YOUR ROLEX	22-23
AFTER-SALES SERVICE	24-25
WORLDWIDE SERVICE NETWORK	26

---

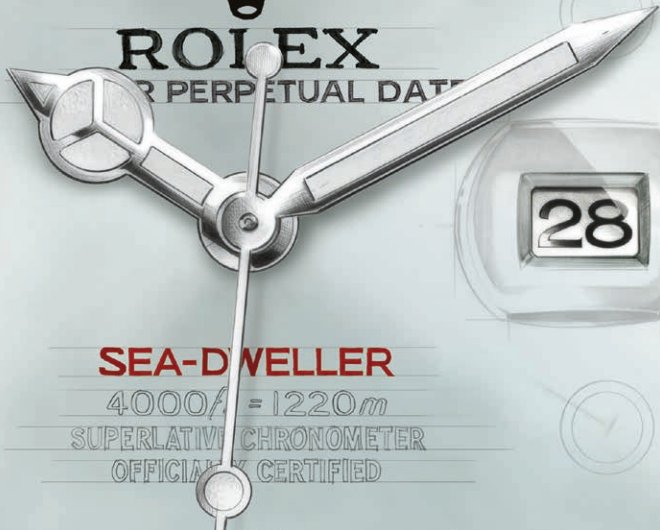
## ROLEX.COM

---



**ROLEX**

PERPETUAL DATE



**SEA-DWELLER**

4000ft = 1220m

SUPERLATIVE CHRONOMETER

OFFICIALLY CERTIFIED

## OYSTER PERPETUAL SEA-DWELLER

The Oyster Perpetual Sea-Dweller, guaranteed waterproof to a depth of 1,220 meters (4,000 feet), was designed to accompany the pioneers of deep-sea diving. Its helium escape valve and unidirectional rotatable bezel make it a true professional diving instrument. Its dial offers exceptional legibility thanks to the Chromalight hour markers and hands coated with a luminescent material emitting a long-lasting blue glow when in darkness. The 43 mm case is a paragon of robustness. The Triplock winding crown, with a triple waterproofness system, is protected by a

crown guard that is an integral part of the middle case. The sapphire crystal, with a Cyclops lens at 3 o'clock, is virtually scratchproof and benefits from an anti-reflective coating.

The Oyster Perpetual Sea-Dweller is equipped with a self-winding mechanical movement entirely manufactured by Rolex.

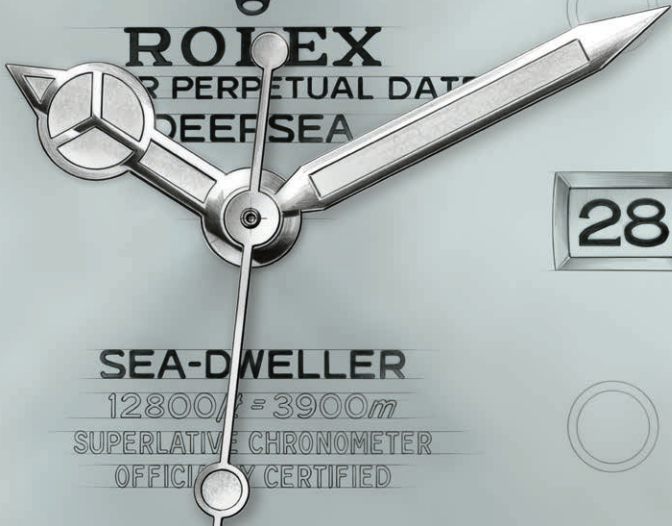
The Oyster Perpetual Sea-Dweller features an Oyster bracelet with an Oysterlock safety clasp and the Rolex Glidelock fine-adjustment system.



**ROLEX**

PERPETUAL DATE

DEEPSEA



28

**SEA-DWELLER**

12800/h = 3900m

SUPERLATIVE CHRONOMETER

OFFICIALLY CERTIFIED

## OYSTER PERPETUAL ROLEX DEEPSEA

The Oyster Perpetual Rolex Deepsea illustrates Rolex's expertise in mastering waterproofness. Guaranteed waterproof to a depth of 3,900 meters (12,800 feet), it benefits from the Ringlock system, a Rolex-developed, patented case architecture that enables it to resist the pressure at these depths. Its helium escape valve and unidirectional rotatable bezel make it a true professional diving instrument. Its dial offers exceptional legibility thanks to the Chromalight hour markers and hands filled with a luminescent material emitting a long-lasting blue glow when in darkness. The 44 mm case is a paragon of robustness.

The Triplock winding crown, with a triple waterproofness system, is protected by a crown guard that is an integral part of the middle case. The sapphire crystal is virtually scratchproof and benefits from an anti-reflective coating.

The Oyster Perpetual Rolex Deepsea is equipped with a self-winding mechanical movement entirely manufactured by Rolex.

The Oyster Perpetual Rolex Deepsea features an Oyster bracelet with an Oysterlock safety clasp and the Rolex Glidelock fine-adjustment system.



## HELIUM ESCAPE VALVE

Professional saturation divers spend long periods of time in a hyperbaric chamber, where the gas mixture they breathe contains a significant proportion of helium. The molecules are so small that they penetrate the watch case.

During the decompression phase that enables divers to gradually eliminate the gas mixture absorbed by their bodies and returns them to normal atmospheric pressure, the helium cannot always escape from the watch case sufficiently quickly. This phenomenon can result in a build-up of pressure inside the timepiece, leading to damage or even separating the crystal from the case.

To allow the gas to be released without compromising the waterproofness of the watch, the Oyster Perpetual Sea-Dweller and the Oyster Perpetual Rolex Deepsea are equipped with the helium escape valve. This unidirectional valve activates automatically when the pressure inside the case is too high.

## OVERVIEW

- 1 Hour hand
- 2 Minute hand
- 3 Seconds hand
- 4 Date window
- 5 Unidirectional rotatable bezel with 60-minute graduated Cerachrom insert in ceramic
- 6 Triplock winding crown with triple waterproofness system
- 7 Helium escape valve

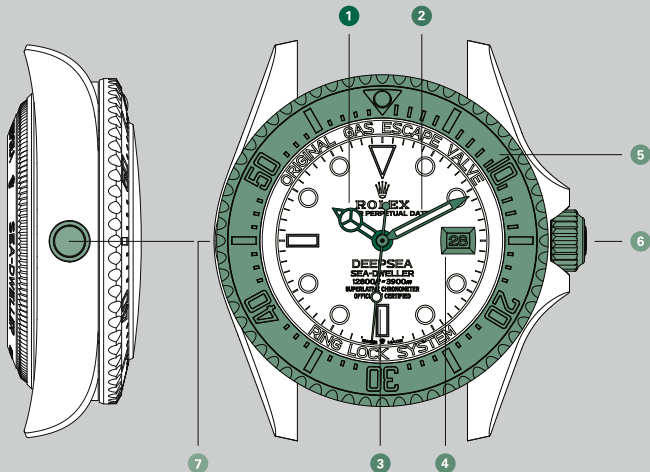


Diagram of the  
Oyster Perpetual Rolex Deepsea

## SETTING THE WATCH

### **Screwed-down position (*position 0*)**

The crown is completely screwed down against the case. When the crown is in this position, the Oyster Perpetual Sea-Dweller and the Oyster Perpetual Rolex Deepsea are guaranteed waterproof to a depth of 1,220 and 3,900 meters (4,000 and 12,800 feet), respectively.

### **Manual winding (*position 1*)**

The crown is unscrewed. To wind the watch manually, turn the crown clockwise; turning in the other direction has no effect. When setting the watch for the first time or after the watch has stopped, complete a minimum of 25 turns for partial winding.

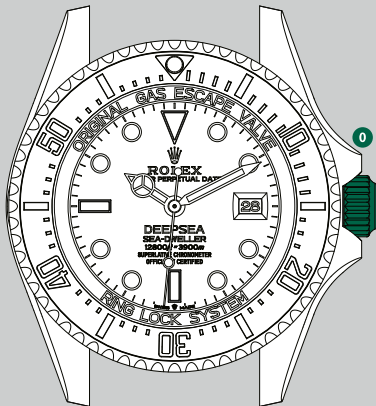
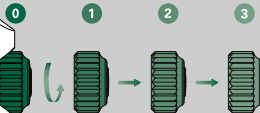


Diagram of the  
Oyster Perpetual Rolex Deepsea

## Initial winding and setting

- Wind the watch manually  
(*position 1* – see page 12).
- Note the date change at midnight,  
then set the time  
(*position 3* – see pages 14-15).
- Set the date  
(*position 2* – see pages 14-15).



Unscrew and then pull out

After every use, carefully screw the crown back down against the case to guarantee the waterproofness. Return the crown to *position 1* and apply light pressure on it while screwing it down clockwise against the case. The crown should never be unscrewed underwater.

### **Setting the date (*position 2*)**

The crown is unscrewed and pulled out to the first notch. To set the date, turn the crown clockwise. (Turning in the other direction has no effect.) During this operation, the watch continues to function.

### **Setting the time (*position 3*)**

The crown is unscrewed and pulled out to the second notch. The seconds hand is stopped, allowing you to set the time to the precise second. To set the hour and minute, turn the crown in either direction. To avoid confusion between am and pm hours, move the hour hand to 12 o'clock. If the date changes, it is midnight.

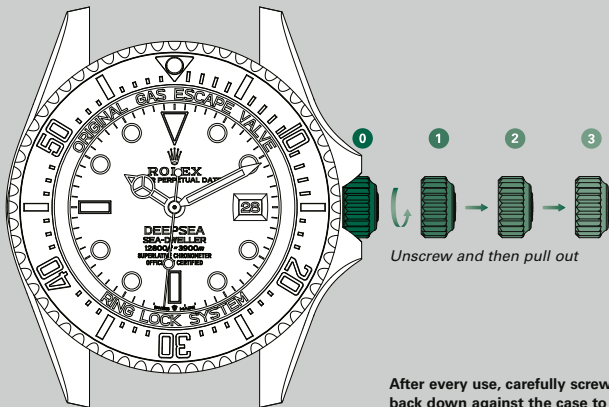


Diagram of the  
Oyster Perpetual Rolex Deepsea

Unscrew and then pull out

After every use, carefully screw the crown back down against the case to guarantee the waterproofness. Return the crown to *position 1* and apply light pressure on it while screwing it down clockwise against the case. The crown should never be unscrewed underwater.





## UNIDIRECTIONAL ROTATABLE BEZEL

The Oyster Perpetual Sea-Dweller and the Oyster Perpetual Rolex Deepsea allow divers to safely monitor their dive time thanks to the unidirectional rotatable bezel fitted with a 60-minute graduated Cerachrom insert made of particularly durable ceramic.

### **Before the dive**

Before beginning your descent, turn the bezel until the triangle on the graduation is opposite the minute hand. It indicates the beginning of the dive and is visible in the dark thanks to a phosphorescent capsule.

### **During the dive**

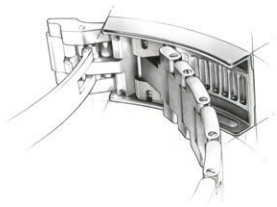
The duration of the dive is indicated on the graduation on the Cerachrom insert by the minute hand.

For safety reasons, the bezel turns only counterclockwise. Accidental rotation of the bezel can therefore only shorten the dive time.

## ROLEX GLIDELOCK FINE-ADJUSTMENT SYSTEM\*

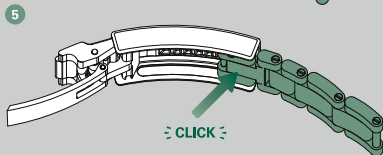
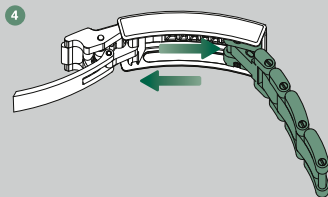
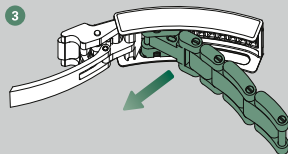
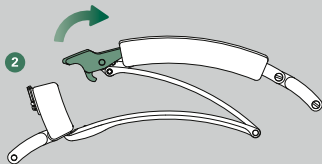
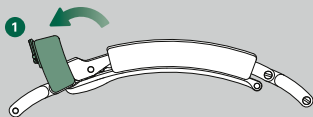
*\*Oyster Perpetual Sea-Dweller model*

On the Oyster bracelet, the Rolex Glidelock fine-adjustment system enables the bracelet length to be adjusted in approximately 2 mm increments up to around 20 mm, allowing the watch to be worn over a diving suit.



### Adjusting the bracelet

- 1 Open the safety catch
- 2 Open the clasp
- 3 Pull on the bracelet to release it from the notch in the rack
- 4 Adjust the position of the bracelet to the desired length
- 5 Lock down the bracelet



*Diagrams of the Oyster Perpetual Sea-Dweller*

## ROLEX GLIDELock FINE-ADJUSTMENT SYSTEM\*

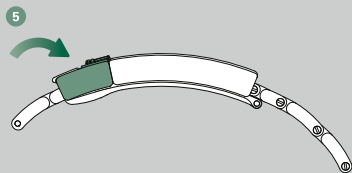
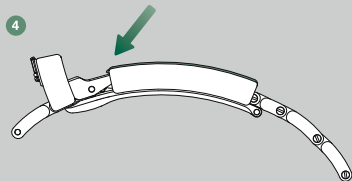
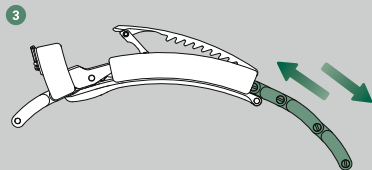
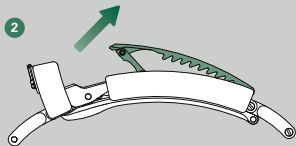
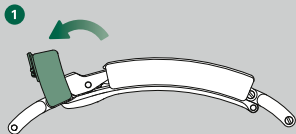
*\*Oyster Perpetual Rolex Deepsea model*

On the Oyster bracelet, the Rolex Glidelock fine-adjustment system enables the bracelet length to be adjusted in approximately 2 mm increments up to around 20 mm, allowing the watch to be worn over a diving suit.

### **Adjustment of the Rolex Glidelock fine-adjustment system**

- 1 Open the safety catch
- 2 Lift the center panel
- 3 Slide the bracelet to the desired length
- 4 Push the center panel back down
- 5 Close the safety catch





## CARING FOR YOUR ROLEX

Thanks to Rolex expertise, your watch will require very little day-to-day care.

You can help preserve its luster by cleaning it occasionally with a microfiber cloth. You can also wash the case and bracelet from time to time using soapy water and a soft brush. After wearing your watch in the sea, it is important to rinse it with fresh water to remove any salt and sand deposits.

Before cleaning your watch, always ensure that the crown is screwed down properly against the case to guarantee waterproofness.



## AFTER-SALES SERVICE

Rolex watch servicing ensures that your timepiece will continue to perform optimally and meet Rolex's stringent requirements in terms of precision, reliability and waterproofness throughout its life.

The timekeeping accuracy of your watch is largely dependent on high-performance lubricants specially developed by Rolex to minimize friction and prevent wear of components. To guarantee continued accuracy and waterproofness, Rolex recommends that you periodically return your watch to an Official Rolex Jeweler or

Service Center for professional servicing, which will always be carried out by a Rolex-approved watchmaker.

During a complete service, the watch is dismantled and all of its components – the case, bracelet and movement – are closely examined.

The movement is entirely disassembled and all the parts are carefully inspected. Those that no longer meet Rolex requirements are systematically replaced by new components. The movement is lubricated on reassembly. The case

and bracelet are re-polished or satin-finished according to their original finish, restoring their shine and luster while removing any marks or scratches.

At the end of the process, your Rolex watch undergoes a series of tests to verify its functions, waterproofness and power reserve, as well as the precision of its movement.

After a complete Rolex service, your watch is covered by a service warranty.

## WORLDWIDE SERVICE NETWORK

The network of Official Rolex Jewelers and Service Centers covers more than 100 countries around the world and draws on the expertise of highly skilled watchmakers, carefully selected and trained by Rolex.

Official Rolex Jewelers can advise you on all the technical aspects of your watch's functions. Whether your bracelet needs sizing or it is time for a complete service, highly qualified Rolex watchmakers are on hand worldwide to meet all of your service needs.

For a list of Official Rolex Jewelers and Service Centers, please visit [rolex.com](https://www.rolex.com).


# ROLEX.COM

We invite you to visit **rolex.com**,  
a privileged place to learn more about  
the functions of your Rolex watch  
and about the quality, know-how and  
fundamental values of the brand.

Welcome to the world of Rolex.

®Trademarks:



ROLEX, , OYSTER, AIR-KING, CERACHROM, CHROMALIGHT, CHRONERGY, COSMOGRAPH, CROWNCLASP, CYCLOPS, DATEJUST, DAY-DATE, DAYTONA, DEEPSEA, EASYLINK, EVEROSE, EXPLORER, EXPLORER II, GMT-MASTER, GMT-MASTER II, JUBILEE, MICROSTELLA, MILGAUSS, OYSTERCLASP, OYSTERFLEX, OYSTERLOCK, OYSTER PERPETUAL, OYSTERSTEEL, PARACHROM, PARAFLEX, PEARLMASTER, PERPETUAL, PRESIDENT, RINGLOCK, RLX, ROLESIMUM, ROLESOR, ROLEX GLIDELOCK, SAROS, SEA-DWELLER, SKY-DWELLER, SUBMARINER, SUNDUST, SYLOXI, TRIPLOCK, TWINLOCK, YACHT-MASTER. CELLINI.

Rolex reserves the right to modify the models illustrated in this publication at any time.

© Rolex Watch U.S.A., Inc., 650 Fifth Avenue, New York, NY 10019

IMR-SEA-US-22 - 4.2022 - Printed in Switzerland

[rolex.com](https://www.rolex.com)

