

CELLINI  
TIME  
DATE  
DUAL TIME  
MOONPHASE



## WEARING THE WATCH FOR THE FIRST TIME

Before being worn for the first time, or if it has stopped, a Rolex watch must be wound manually in order to function correctly and precisely. To wind the watch manually, unscrew the winding crown completely, then turn it several times clockwise. (Turning in the other direction has no effect.) A minimum of 25 turns is required for adequate partial winding. The watch will then be wound automatically as long as it is worn on the wrist. Carefully screw the crown back down against the case to ensure waterproofness.



The green seal accompanying your Rolex watch is a symbol of its status as a Superlative Chronometer. This exclusive designation attests that it has successfully undergone a series of specific final controls by Rolex in its own laboratories in addition to the official COSC certification of its movement. This unique testing of its chronometric precision, waterproofness, self-winding and reliability pushes back the boundaries of performance and makes Rolex a benchmark for excellence in mechanical watches. For further information, please visit [rolex.com](https://www.rolex.com).



## THE HEART OF THE CELLINI MODELS

---

CELLINI	4-5
---------	-----

## USING YOUR WATCH

---

OVERVIEW OF THE CELLINI TIME	6-7
SETTING THE CELLINI TIME	8-9
OVERVIEW OF THE CELLINI DATE	10-11
SETTING THE CELLINI DATE	12-15
OVERVIEW OF THE CELLINI DUAL TIME	16-17
SETTING THE CELLINI DUAL TIME	18-25
OVERVIEW OF THE CELLINI MOONPHASE	26-27
THE PHASES OF THE MOON	28-29
SETTING THE CELLINI MOONPHASE	30-41

## ROLEX SERVICE

---

CARING FOR YOUR ROLEX	42-43
AFTER-SALES SERVICE	44-45
WORLDWIDE SERVICE NETWORK	46

## ROLEX.COM

---





**ROLEX**  
**GENEVE**

*Cellini*

## CELLINI

Rolex is introducing the Cellini collection, a contemporary celebration of classicism and the eternal elegance of traditional timepieces. This collection of classically inspired models combines the best of Rolex know-how and its high standards of perfection with an approach that highlights watchmaking heritage in its most timeless form.

Sober and refined lines, noble materials, quality finishings: every detail respects the codes of the art of watchmaking. The round case is a traditional 39 mm in diameter. The flared shape of the

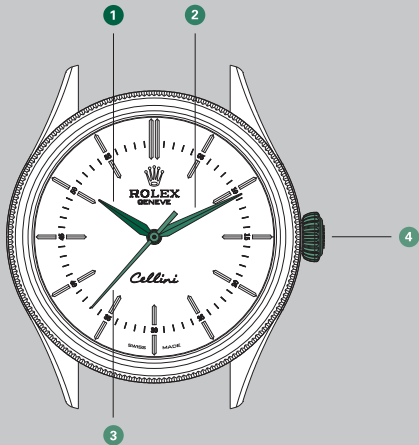
screw-down crown highlights its refined aesthetics. The dials, whose layouts are determined by the watches' different functions, also bear witness to know-how and tradition.

The Cellini models are equipped with a self-winding mechanical movement, certified as a chronometer and entirely manufactured by Rolex.

In the purest traditional style, the Cellini models are fitted with a leather strap.

# OVERVIEW CELLINI TIME

- 1 Hour hand
- 2 Minute hand
- 3 Seconds hand
- 4 Winding crown



## SETTING THE CELLINI TIME

### **Screwed-down position (*position 0*)**

The crown is completely screwed down against the case. When the crown is in this position, the Cellini Time is guaranteed waterproof to a depth of 50 metres (165 feet).

### **Manual winding (*position 1*)**

The crown is unscrewed. To wind the watch manually, turn the crown clockwise. (Turning in the other direction has no effect.) When setting the watch for the first time or if the watch has stopped, complete a minimum of 25 turns for partial winding.

### **Setting the time (*position 2*)**

The crown is unscrewed and pulled out to the first notch. The seconds hand is stopped, allowing you to set the time to the precise second. To set the hour and minute, turn the crown in either direction.

### Initial winding and setting

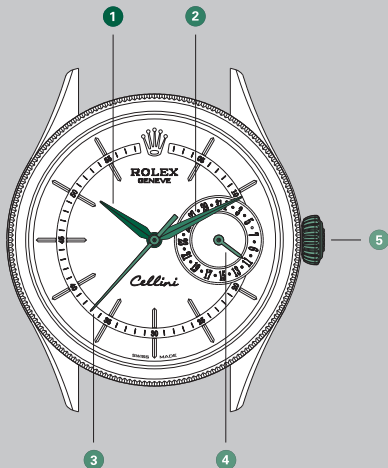
- A. Wind the watch manually (*position 1*).
- B. Set the time (*position 2*).



After every use, carefully screw the crown back down against the case to guarantee the waterproofness. Return the crown to *position 1* and apply light pressure on it while screwing it down clockwise against the case. The crown should never be unscrewed underwater.

# OVERVIEW CELLINI DATE

- 1 Hour hand
- 2 Minute hand
- 3 Seconds hand
- 4 Date hand
- 5 Winding crown





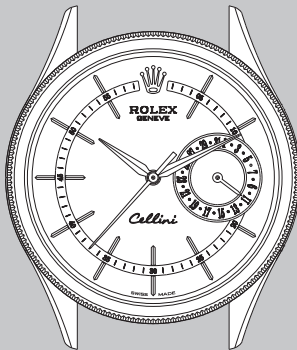
## SETTING THE CELLINI DATE

### **Screwed-down position (*position 0*)**

The crown is completely screwed down against the case. When the crown is in this position, the Cellini Date is guaranteed waterproof to a depth of 50 metres (165 feet).

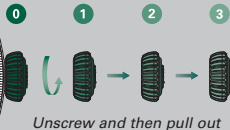
### **Manual winding (*position 1*)**

The crown is unscrewed. To wind the watch manually, turn the crown clockwise. (Turning in the other direction has no effect.) When setting the watch for the first time or if the watch has stopped, complete a minimum of 25 turns for partial winding.



### Initial winding and setting

- A. Wind the watch manually (*see page 12*).
- B. Set the time by turning the hands clockwise and by noting the date change at midnight (*see pages 14-15*).
- C. Set the date (*see pages 14-15*).



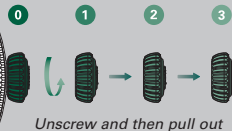
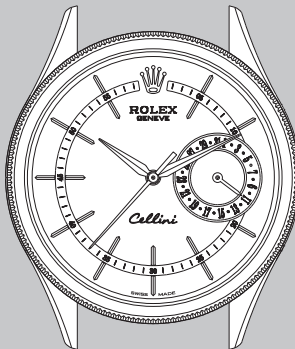
After every use, carefully screw the crown back down against the case to guarantee the waterproofness. Return the crown to *position 1* and apply light pressure on it while screwing it down clockwise against the case. The crown should never be unscrewed underwater.

### **Setting the date (*position 2*)**

The crown is unscrewed and pulled out to the first notch. To set the date, turn the crown in either direction. The hour hand moves in increments of one hour and the date changes every other time the hour hand passes 12 o'clock. During this operation, the watch continues to function.

### **Setting the time (*position 3*)**

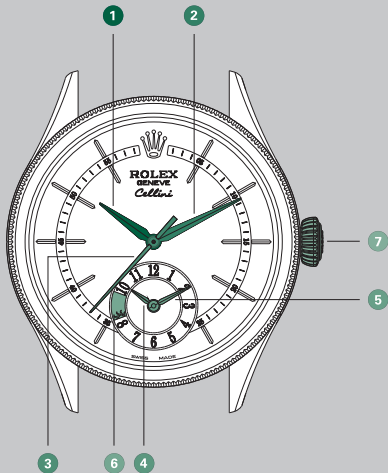
The crown is unscrewed and pulled out to the second notch. The seconds hand is stopped, allowing you to set the time to the precise second. To set the hour and minute, turn the crown in either direction. To avoid confusion between a.m. and p.m. hours, move the hour hand to 12 o'clock. If the date changes, it is midnight.



After every use, carefully screw the crown back down against the case to guarantee the waterproofness. Return the crown to *position 1* and apply light pressure on it while screwing it down clockwise against the case. The crown should never be unscrewed underwater.

## OVERVIEW CELLINI DUAL TIME

- 1 Hour hand
- 2 Minute hand
- 3 Seconds hand
- 4 Hour hand  
(reference time)
- 5 Minute hand  
(reference time)
- 6 Day/night indicator
- 7 Winding crown



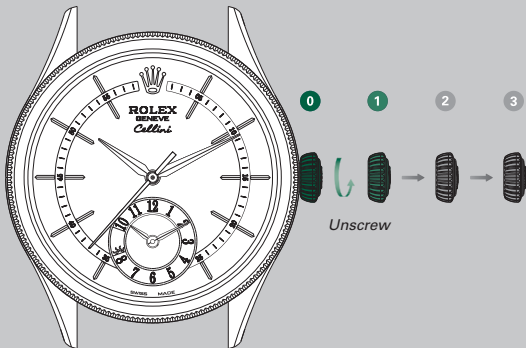
## SETTING THE CELLINI DUAL TIME

### **Screwed-down position (*position 0*)**

The crown is completely screwed down against the case. When the crown is in this position, the Cellini Dual Time is guaranteed waterproof to a depth of 50 metres (165 feet).

### **Manual winding (*position 1*)**

The crown is unscrewed. To wind the watch manually, turn the crown clockwise. (Turning in the other direction has no effect.) When setting the watch for the first time or if the watch has stopped, complete a minimum of 25 turns for partial winding.



After every use, carefully screw the crown back down against the case to guarantee the waterproofness. Return the crown to *position 1* and apply light pressure on it while screwing it down clockwise against the case. The crown should never be unscrewed underwater.



## COMPLETE SETTING OF THE WATCH IS CARRIED OUT IN TWO STEPS IN THE ORDER GIVEN

### 1. Setting the reference time

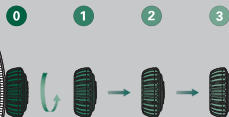
To set the reference time, follow the steps in the order given:

- Unscrew the crown and then pull it out to the second notch (*position 3*). The seconds hand is stopped, allowing you to set the time to the precise second.

- Set the reference time by turning the crown in either direction. Note the difference between a.m. and p.m. hours by checking the day/night indicator.

Setting the reference time also moves the conventional hour and minute hands (local time). For this reason, the reference time should be set before setting the local time.

Go to step 2 ➡



*Unscrew and then pull out*

*\* Reference time, Geneva, 10.10 a.m.*

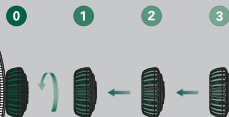
**After every use, carefully screw the crown back down against the case to guarantee the waterproofness. Return the crown to *position 1* and apply light pressure on it while screwing it down clockwise against the case. The crown should never be unscrewed underwater.**

## 2. Setting the local time

To set the local time, follow the steps in the order given:

- Pull the crown out to the first notch (*position 2*).
- Set the local time by turning the crown in either direction. The hour hand moves in increments of one hour.
- Push in and then screw down the crown.

The local time is identical to the reference time if the wearer is currently located in his reference zone. It can be easily adjusted when travelling.



*Push in, then screw down*

*\* Reference time, Geneva, 10.10 a.m.  
Local time, Geneva, 10.10 a.m.*

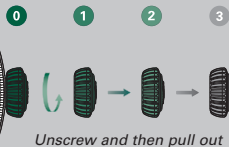
**After every use, carefully screw the crown back down against the case to guarantee the waterproofness. Return the crown to *position 1* and apply light pressure on it while screwing it down clockwise against the case. The crown should never be unscrewed underwater.**

### ADJUSTING THE LOCAL TIME

When travelling, to adjust local time only (without affecting the reference time display), follow the steps in the order given:

- Unscrew the crown and then pull it out to the first notch (*position 2*).
- Set the local time by turning the crown in either direction. The hour hand moves in increments of one hour.
- Push in and then screw down the crown.

The day/night indicator is linked to the reference time and tells the wearer whether it is day or night in the reference time zone.



\* *Reference time, Geneva, 10.10 a.m.*  
*Local time, New York, 4.10 a.m.*

After every use, carefully screw the crown back down against the case to guarantee the waterproofness. Return the crown to *position 1* and apply light pressure on it while screwing it down clockwise against the case. The crown should never be unscrewed underwater.

## OVERVIEW OF THE CELLINI MOONPHASE

- 1 Hour hand
- 2 Minute hand
- 3 Seconds hand
- 4 Date hand
- 5 Moonphase indicator
- 6 Moonphase correction pusher
- 7 Moonphase correction tool
- 8 Winding crown



Screwed-down position

0



Manual winding

1



Full moon symbol

Setting the date  
and the hour

2



New moon symbol

Setting the moonphase  
Setting the minute

3



8



7



FULL MOON



WANING GIBBOUS



LAST QUARTER



WANING CRESCENT



NEW MOON



WAXING GIBBOUS



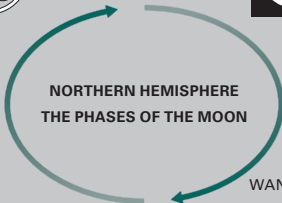
FIRST QUARTER

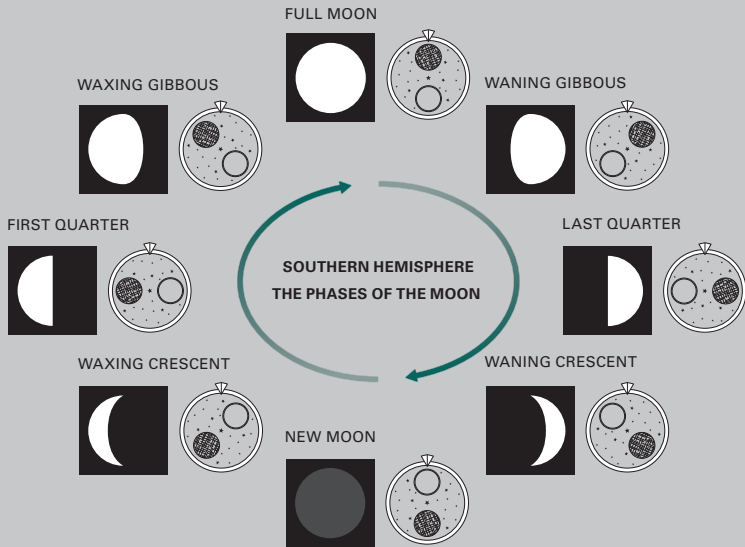


WAXING CRESCENT



NORTHERN HEMISPHERE  
THE PHASES OF THE MOON





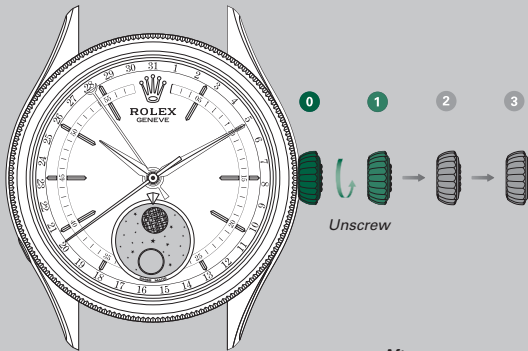
## SETTING THE CELLINI MOONPHASE

### **Screwed-down position (*position 0*)**

The crown is completely screwed down against the case. When the crown is in this position, the Cellini Moonphase is guaranteed waterproof to a depth of 50 metres (165 feet).

### **Manual winding (*position 1*)**

The crown is unscrewed. To wind the watch manually, turn the crown clockwise. (Turning in the other direction has no effect.) When setting the watch for the first time or if the watch has stopped, complete a minimum of 25 turns for partial winding.

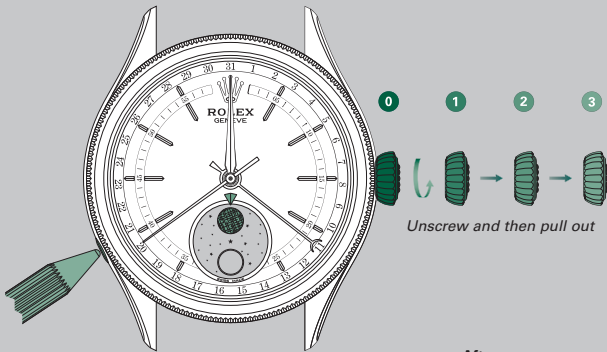


After every use, carefully screw the crown back down against the case to guarantee the waterproofness. Return the crown to *position 1* and apply light pressure on it while screwing it down clockwise against the case. The crown should never be unscrewed underwater.

## **COMPLETE SETTING OF THE WATCH IS CARRIED OUT IN THREE STEPS IN THE ORDER GIVEN**

### **1. Setting the moonphase**

- Use the moonphase correction tool.
- Press the moonphase correction pusher as many times as necessary to align the full moon symbol as closely as possible with the moonphase indicator.
- Unscrew the crown and then pull it out to the second notch (*position 3*).
- Finely adjust the alignment of the full moon symbol and the moonphase indicator by turning the crown in either direction (several turns may be required).
- Bring the minute hand to 12 o'clock by turning the crown in either direction.



After every use, carefully screw the crown back down against the case to guarantee the waterproofness. Return the crown to *position 1* and apply light pressure on it while screwing it down clockwise against the case. The crown should never be unscrewed underwater.

- Consult the current year's lunar calendar (available on rolex.com) to find the date of the last full moon.
- Count the number of days from the date of the last full moon to the current date (inclusive).
- Press the moonphase correction pusher with the correction tool as many times as the number of days calculated in the previous step. The moonphase is now set.

### **Example**

*The current date is 28 March. The last full moon was 12 March. 16 days have passed since that full moon (28–12). The correction pusher must, therefore, be pressed 16 times.*

In the event that the corrector is pushed an incorrect number of times, start the setting procedure again from the beginning of step 1.

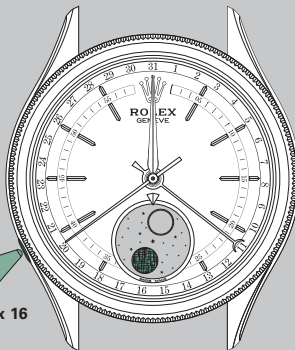
Go to step 2 ➡

MARCH

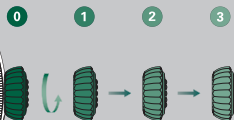
| 12 | 13 | 14 | 15 | 16 | 17 | 18 | 19 | 20 | 21 | 22 | 23 | 24 | 25 | 26 | 27 | 28 |



16 days



x 16



*Unscrew and then pull out*

After every use, carefully screw the crown back down against the case to guarantee the waterproofness. Return the crown to *position 1* and apply light pressure on it while screwing it down clockwise against the case. The crown should never be unscrewed underwater.



## 2. Setting the date and the hour

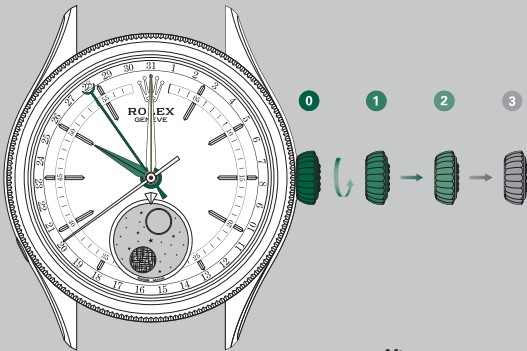
- Pull the crown out to the first notch (*position 2*).
- To set the date, turn the crown in either direction until the current date is displayed. The hour hand moves in increments of one hour and the date changes every other time the hour hand passes 12 o'clock.

### *Example*

*Referring back to the example in step 1, the date here is set to the 28th of the month.*

- Set the hour by turning the crown in either direction. The hour hand moves in increments of one hour. Note the difference between a.m. and p.m. hours (the date changes as the hand passes midnight).

Go to step 3 ➡

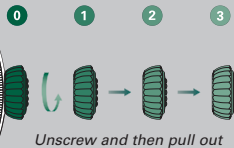


After every use, carefully screw the crown back down against the case to guarantee the waterproofness. Return the crown to *position 1* and apply light pressure on it while screwing it down clockwise against the case. The crown should never be unscrewed underwater.

### 3. Setting the minute

- Pull the crown out to the second notch (*position 3*). The seconds hand is stopped, allowing you to set the time to the precise second.
- Set the minute by turning the crown in either direction. The other functions (hour, date and moonphase) are synchronized accordingly.
- Push in and then screw down the crown.

If a previously correctly synchronized watch has stopped for no more than two days, it is possible to adjust it simply by pulling out the crown to the second notch (*position 3*). First adjust the date, then the hour and then the minute by turning the crown clockwise. The moonphase is synchronized accordingly.



After every use, carefully screw the crown back down against the case to guarantee the waterproofness. Return the crown to *position 1* and apply light pressure on it while screwing it down clockwise against the case. The crown should never be unscrewed underwater.

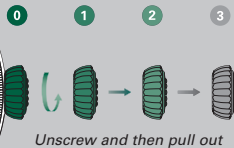
## ADJUSTING THE LOCAL TIME

When travelling, to adjust the local time, follow the steps in the order given:

- Unscrew the crown and then pull it out to the first notch (*position 2*).
- Set the local time by turning the crown in either direction. The hour hand moves in increments of one hour.
- Push in and then screw down the crown.

Adjusting local time desynchronizes the moonphase which is always indexed to reference time.

After the wearer returns from a trip, the contrary adjustment resynchronizes the moonphase.



After every use, carefully screw the crown back down against the case to guarantee the waterproofness. Return the crown to *position 1* and apply light pressure on it while screwing it down clockwise against the case. The crown should never be unscrewed underwater.

## CARING FOR YOUR ROLEX

Thanks to Rolex expertise, your watch will require very little day-to-day care.

You can help preserve its lustre by cleaning it occasionally with a microfibre cloth. You can also wash the case from time to time using soapy water and a soft brush. Before cleaning your watch, always ensure that the crown is screwed down properly against the case to guarantee waterproofness.

To keep the leather strap in good condition, it is recommended that you protect it from water and humidity.



## AFTER-SALES SERVICE

Rolex watch servicing ensures that your timepiece will continue to perform optimally and meet Rolex's stringent requirements in terms of precision, reliability and waterproofness throughout its life.

The timekeeping accuracy of your watch is largely dependent on high-performance lubricants specially developed by Rolex to minimize friction and prevent wear of components. To guarantee continued accuracy and waterproofness, Rolex recommends that you periodically return

your watch to an Official Rolex Retailer or Service Centre for professional servicing. When your watch is serviced by a Rolex watchmaker, the watch is completely dismantled and all of its components are cleaned. Each individual component is closely examined and those that no longer meet Rolex's functional and aesthetic specifications are replaced with genuine Rolex parts. The movement is carefully lubricated then tested to guarantee its timing accuracy; the case is meticulously refinished to restore its lustre.

Your Rolex then undergoes a series of rigorous technical tests and checks to guarantee its waterproofness, power reserve and precision.

After a complete Rolex service, your watch is covered by a service guarantee.

## WORLDWIDE SERVICE NETWORK

The network of Official Rolex Retailers and Service Centres covers more than 100 countries around the world and draws on the expertise of highly skilled watchmakers, carefully selected and trained by Rolex.

Official Rolex Retailers can advise you on all the technical aspects of your watch's functions. Whether your bracelet needs sizing or it is time for a complete service, highly qualified Rolex watchmakers are on hand worldwide to meet all of your service needs.

For a list of Official Rolex Retailers and Service Centres, please visit [rolex.com](https://www.rolex.com).

# ROLEX.COM

We invite you to visit **rolex.com**,  
a privileged place to learn more about  
the functions of your Rolex watch  
and about the quality, know-how and  
fundamental values of the brand.

Welcome to the world of Rolex.

Rolex reserves the right to modify the models illustrated in this publication at any time.

© Rolex SA, 3-5-7, rue François-Dussaud, 1211 Geneva 26, Switzerland  
668.62 Eng - 5.2020 - Printed in Switzerland

[rolex.com](https://www.rolex.com)

